



1+



10



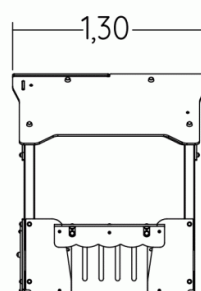
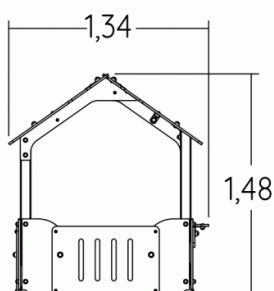
0,6m



1 = 1,34m

2 = 1,3m

3 = 1,48m



Play value : 4



role play

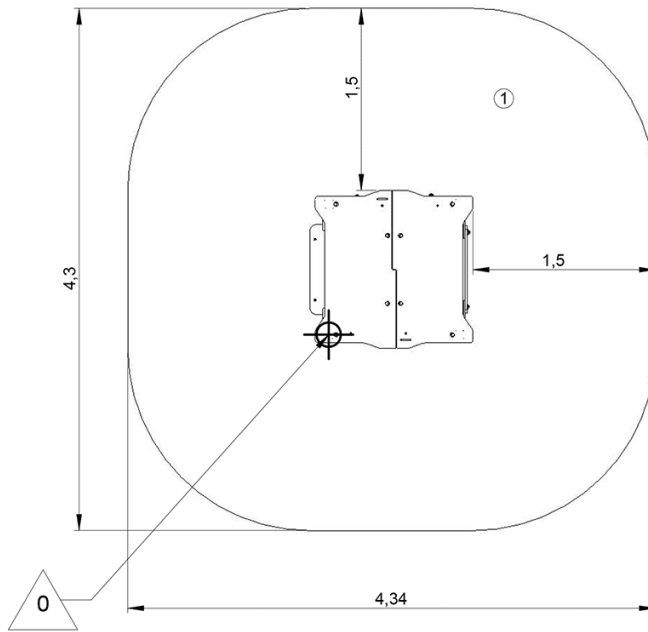




x4

Installation of equipment

IMPORTANT: It is essential to refer to the installation instructions for information on the size of the safety areas.

-  Impact area (minimum normative surface)
-  Free space



		
1	<0,6m	17m ²



2



02h00



0.12m³



17m²



110kg



15kg

